

ScrewDrivers User Assigned Printers - User Manual



Simplify Printing for Windows XP, Vista, 7, 2000, 2003, and 2008

tricerat[®] 

Introduction

If you are reading this manual, then your company has replaced the standard Windows printing configuration with Simplify Printing. The steps used for printing are unaffected, but there are new procedures for adding printers, removing printers, and changing the default printer.

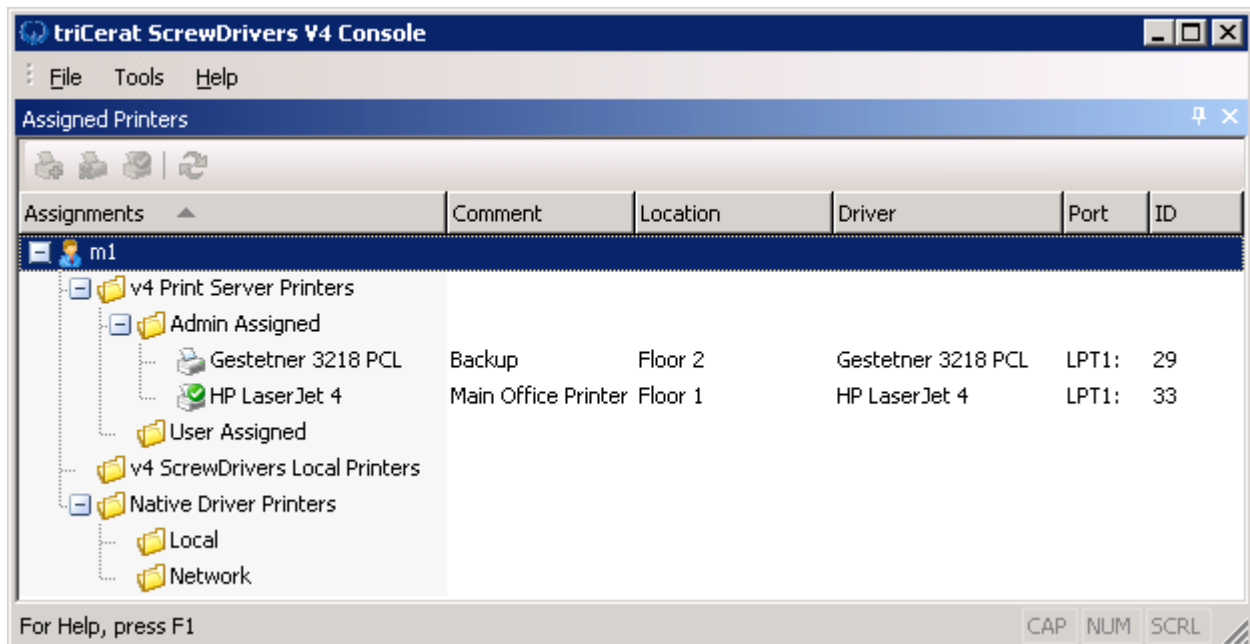
Simplify Printing includes a new utility for managing printers named ScrewDrivers User Assigned Printers. This application should be found in the Citrix application list or on the Desktop. The shortcut may be named different but the icon should be the triCerac blue horns:



About the ScrewDrivers User Assigned Printers utility

This utility displays your printers in categories based on how they are assigned:

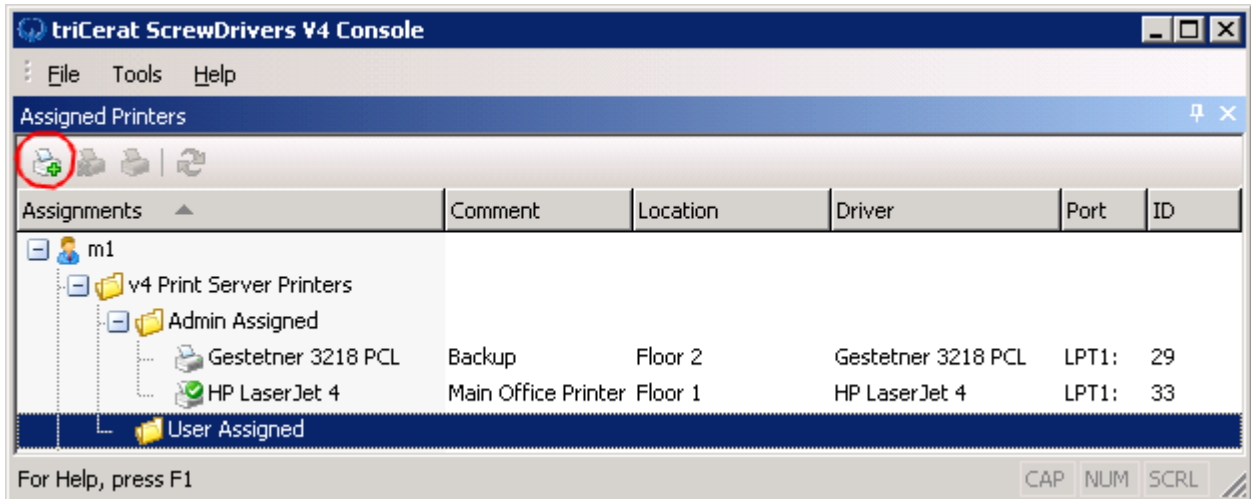
- Admin Assigned – these network printers are statically assigned to you by the administrator. You cannot remove Admin Assigned printers.
- User Assigned – these network printers are dynamically managed and assigned by you. You can add and remove User Assigned printers.
- v4 ScrewDrivers Local Printers – Used for remote environments such as Citrix, Remote Desktop, and Virtual Desktop. These printers are client printers automatically added by the ScrewDrivers Client.



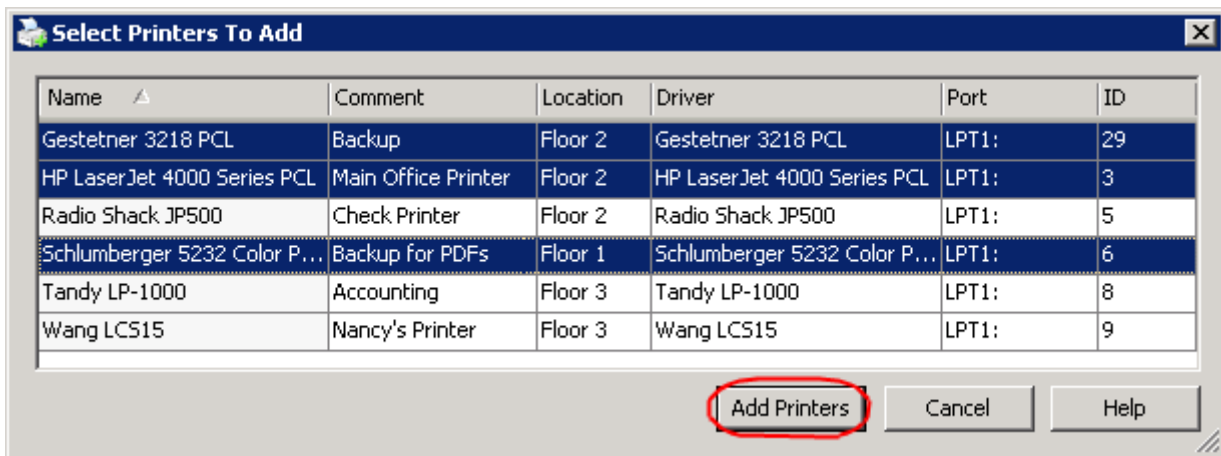
As you can see, the ScrewDrivers User Assigned Printers displays the Assigned Printers. The printer with a green checkmark represents the default printer.

Adding printers

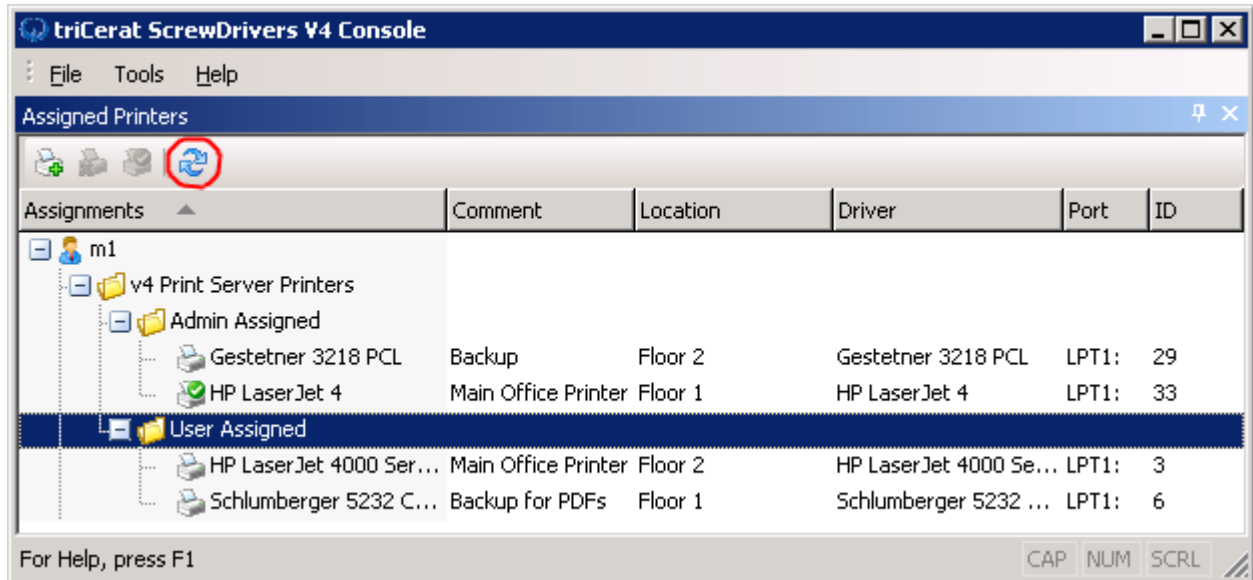
1. Select the User Assigned folder and press the Add Printer button.



2. Select the printer(s) and press Add Printers. Multiple printers can be selected by holding CTRL.

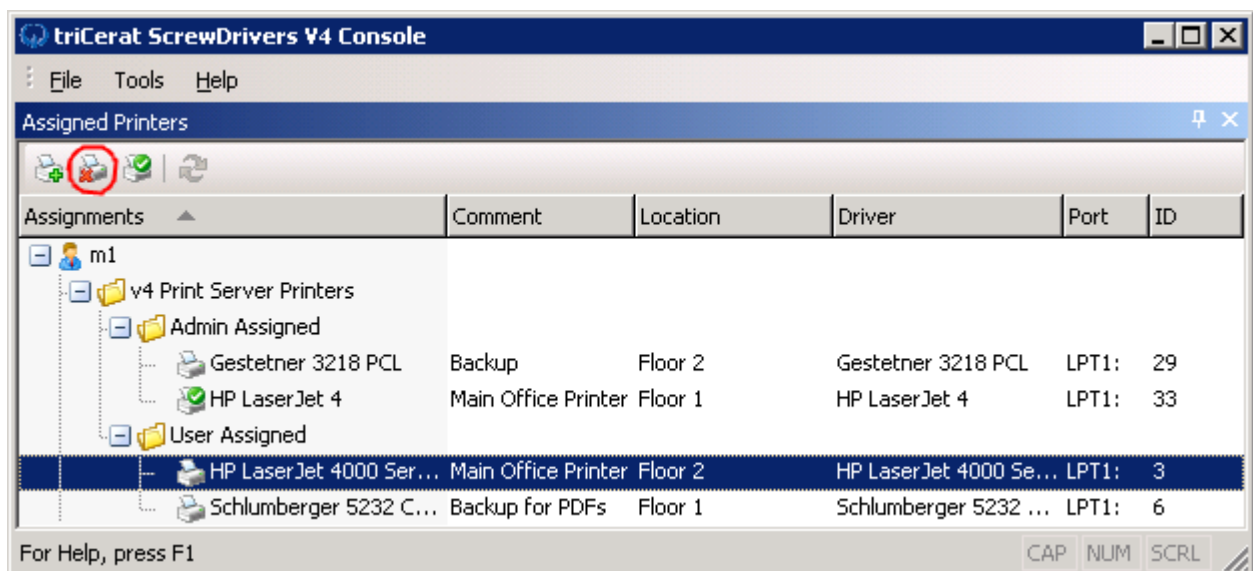


3. Press the Refresh ScrewDrivers Printers button after you've added the printer(s). This button synchronizes the changes you make.



Removing printers

1. Select the User Assigned printer and press the Delete Printer button.



2. Press the Refresh ScrewDrivers Printers button after deleting the User Assigned printer(s).

Setting the default printer

1. If you want to set this printer as your default printer, right-click the printer name and choose Set as Default. Additionally you may use the Set As Default Printer button.

