

Installing SQL Express for Simplify Suite

SQL Express 2000, 2005, and 2008 are supported. It is recommended to install SQL on a dedicated server, not the application server. This SQL server can host other databases. Please use a pre-existing SQL server when possible.

SQL 2008 Express System Requirements

Supported OS: Windows Server 2003 SP2, Windows Server 2008, Windows Vista, Windows XP SP2

Physical Limitations: 1 CPU, 1 GB Memory for Database Engine, 4 GB for Reporting Services.

- SQL Server (non-express) supports more hardware, recommended for larger environments.

Downloads

SQL 2005 Express (<http://www.microsoft.com/downloads/details.aspx?FamilyId=220549b5-0b07-4448-8848-dcc397514b41&displaylang=en>)

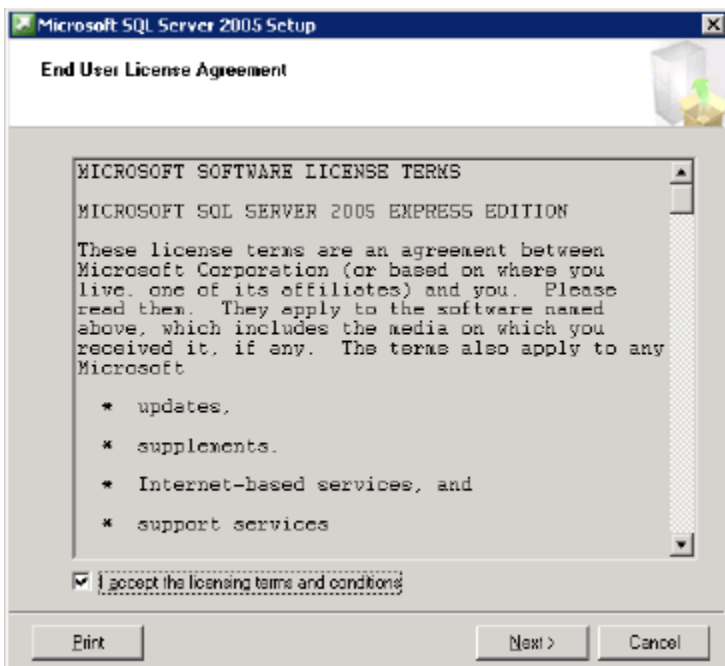
SQL 2008 Express (<http://www.microsoft.com/downloads/details.aspx?FamilyID=58ce885d-508b-45c8-9fd3-118edd8e6fff&DisplayLang=en>)

Follow these directions

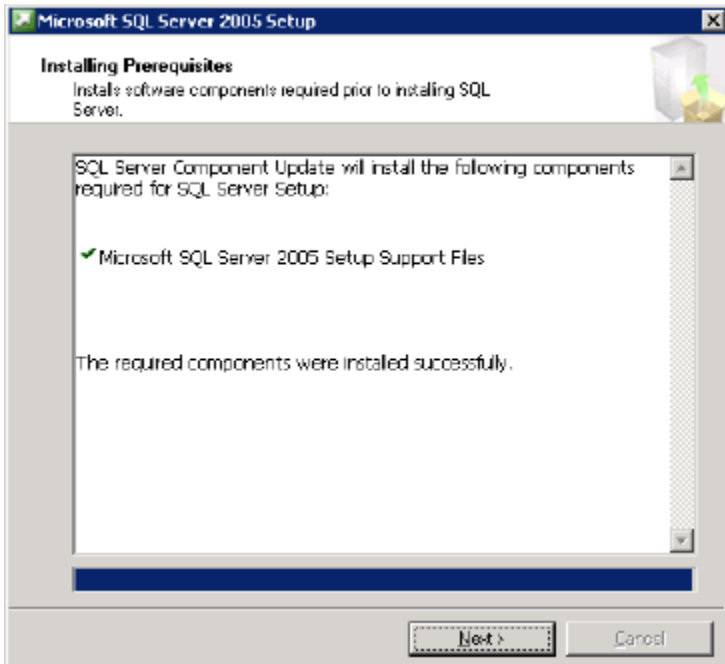
1. Run the SQL Express installer



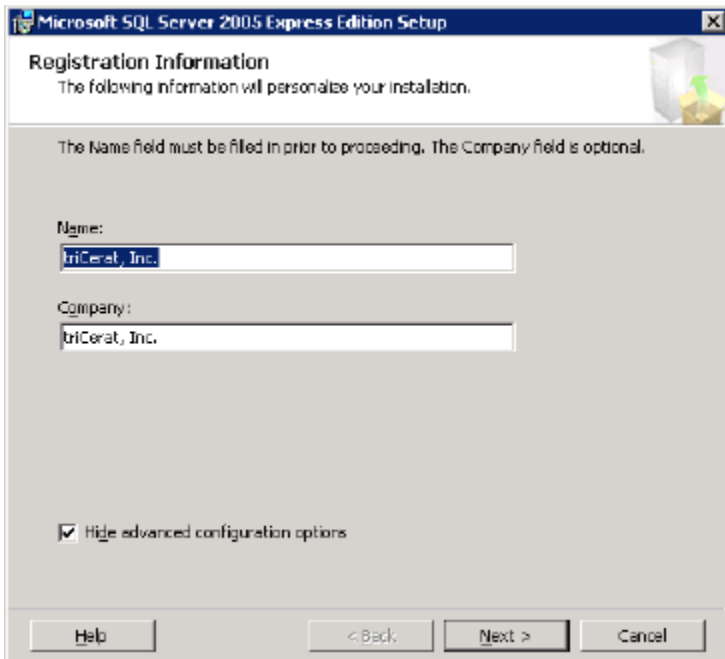
2. Accept the licensing terms and conditions, and press next.



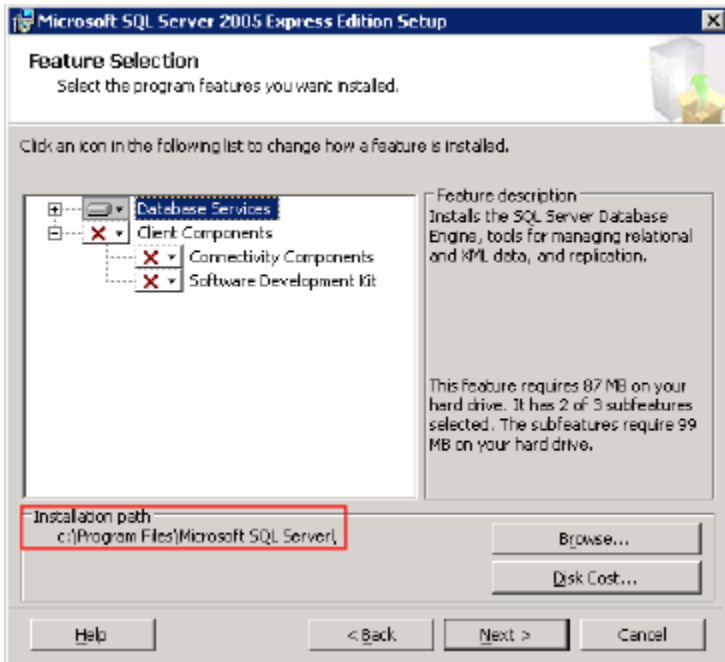
3. Press **Next** after Installing Prerequisites



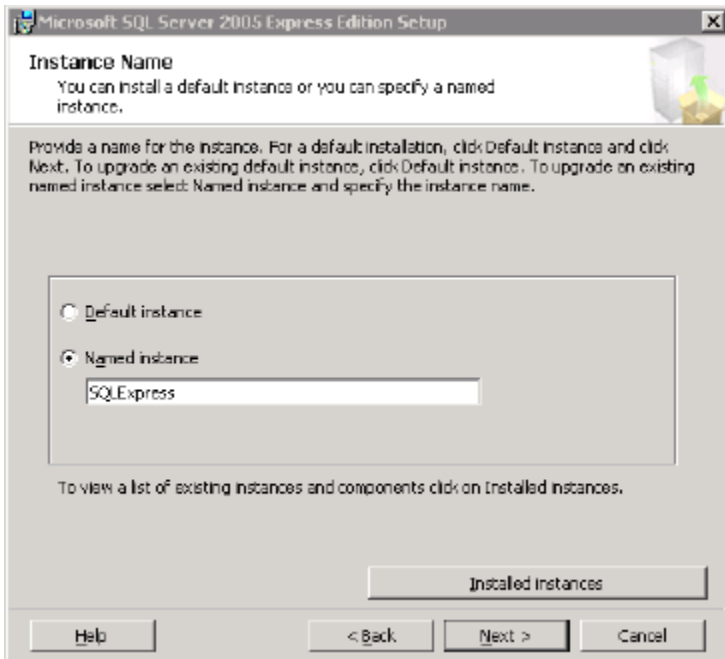
4. Complete the Registration Information and press **Next**.



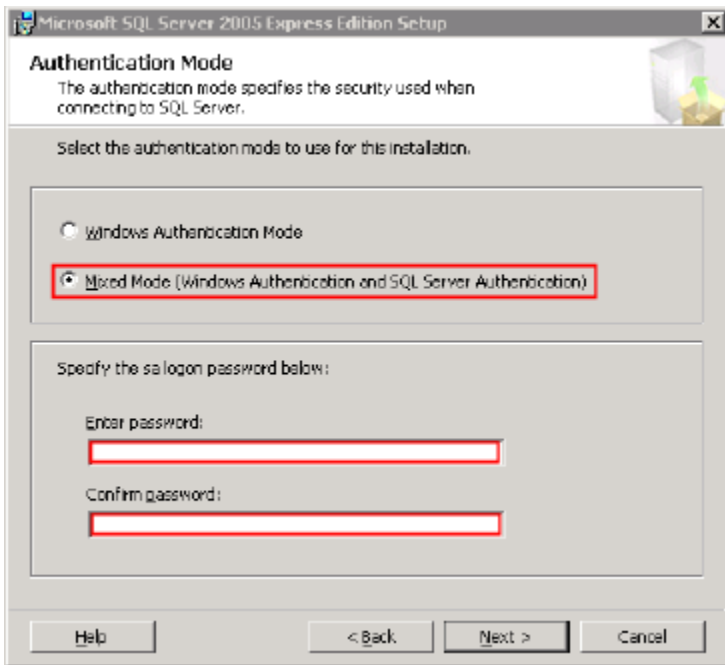
5. Modify the Features and Installation path as desired. Default settings are acceptable.



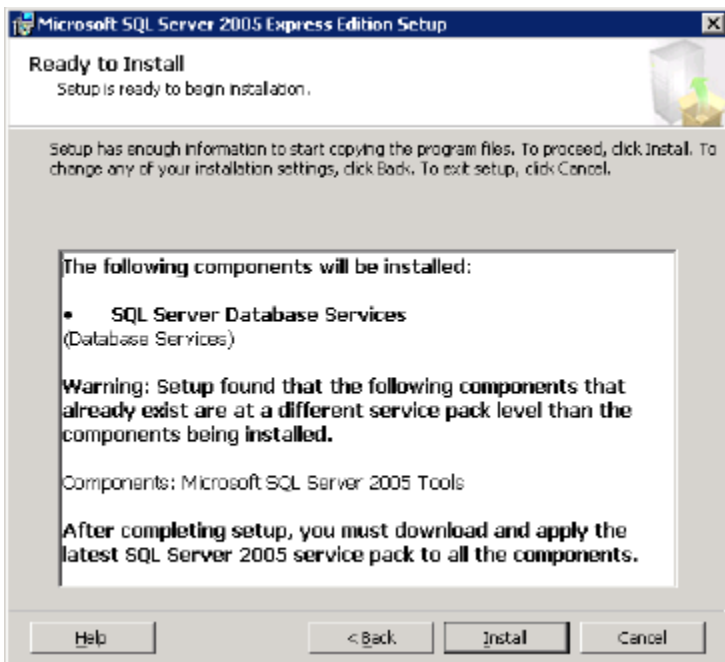
6. Name the SQL instance.



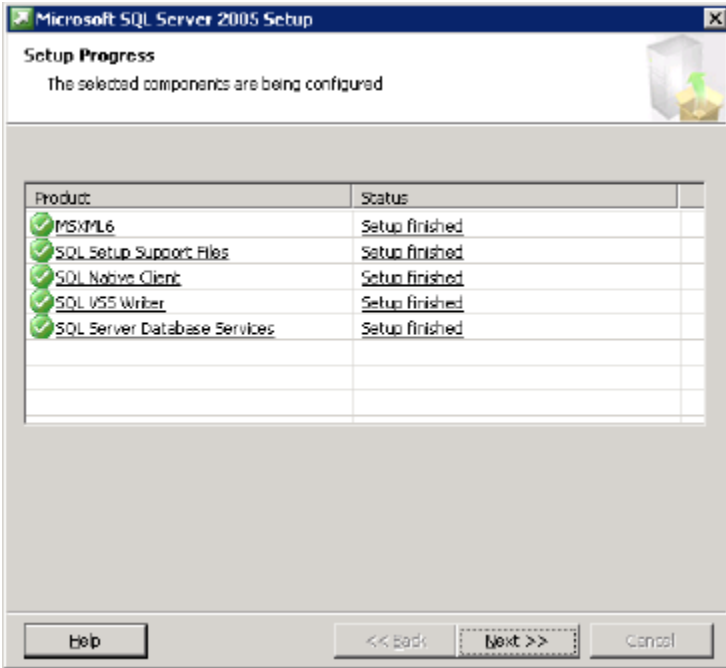
7. Set the SQL server to use Mixed Mode for Authentication. SQL credentials must be used for Simplify Suite's connectivity.



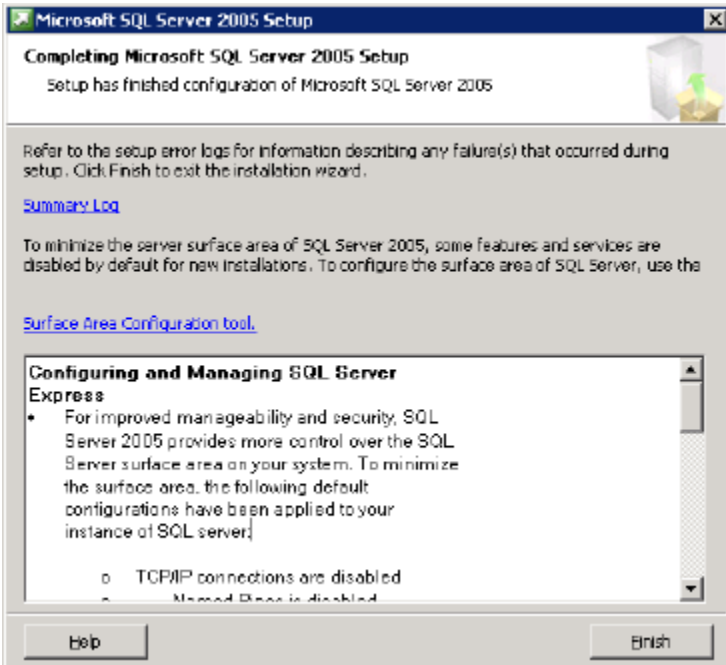
8. Review the Install notes and press **Install**.



9. Press **Next** after the Setup completes.



10. Review the SQL Setup and press **Finish**.



Installing Simplify Suite

After the SQL Server is setup, you are ready to start the Simplify Suite install. Please refer to Simplify Suite documentation if you need help: <http://www.tricerat.com/support/Simplify%20Suite/webframe.html>